

CALIFORNIA ADAPTATION PLANNING GUIDE

December 2019
Public Review Webinars



Cal OES
GOVERNOR'S OFFICE
OF EMERGENCY SERVICES

Introduction

Adaptation Planning
Guide Public Review



Cal OES
GOVERNOR'S OFFICE
OF EMERGENCY SERVICES

APG 2.0 Public Review Draft Webinar Project Team Representatives

Cal OES

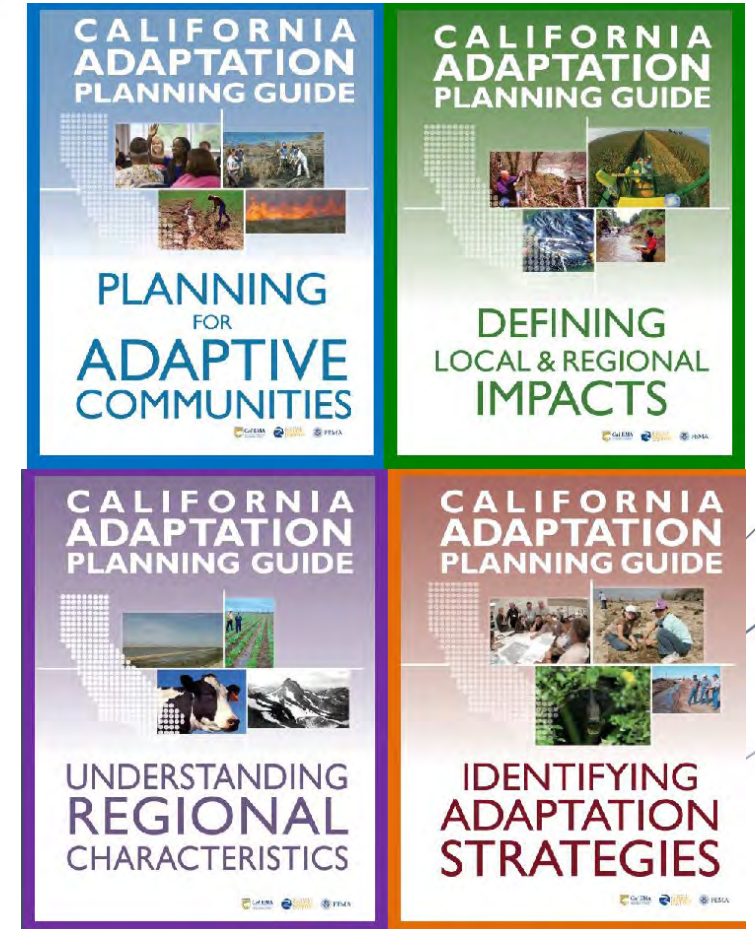
- Derek Lambeth
- Miles Gordon

Consultant Team

- Tammy Seale, PlaceWorks
- Eli Krispi, PlaceWorks
- Natalie Hernandez, Climate Resolve

What is the APG?

- Adaptation planning resource for local, regional, and tribal governments in California.
- APG "2.0" updates the APG released in 2012.
- A four-phase process for local governments to develop specific adaptation and resilience strategies at the local level.



What is the APG?

- References the most recent climate science and provides resources to obtain data and use California-specific climate science tools.
- Resource to complete a vulnerability assessment and adaptation framework that can be used in a variety of local government plans.



INTERAGENCY WORKING GROUP

- Representatives of federal, state, and local government agencies, tribal governments, and non-profits.
- Purpose: Help integrate the resources of the participants, review work on APG 2.0, advise project team, and support stakeholder engagement.



Introduction

Updating the APG



Cal OES
GOVERNOR'S OFFICE
OF EMERGENCY SERVICES

APG 2.0 Consultant Team

PlaceWorks (Prime)

Tammy
Seale

Eli Krispi

Jacqueline
Protsman

ICF

Robert Kay

Beth
Rodehorst

Tommy
Hendrickson

Maya
Bruguera

Climate Resolve

Jonathan
Parfrey

Natalie
Hernandez

Adrienne
Greve,
Ph.D.

Michael
Boswell,
Ph.D.,
AICP



Cal OES
GOVERNOR'S OFFICE
OF EMERGENCY SERVICES

Goals for APG 2.0

- Update and integrate new state resources, updated science, and best practices into adaptation planning process.
- Provide resources on alignment and integration with other local and state adaptation planning efforts.
- Share options to meet requirements like SB 379.
- Integrate equity and outreach into all phases.
- Anticipate integration into the Adaptation Clearinghouse.



Update Process: Literature Review

Topics Reviewed

- Vulnerability assessment
- Adaptation strategy development
- Equity, outreach, and engagement
- Strategy assessment and costs
- Plan alignment and mainstreaming
- Uncertainty



Update Process: Plan Review

Key State Plans and Resources

- Safeguarding California Plan: 2018 Update
- California 4th Climate Change Assessment
- State of California Sea-Level Rise Guidance
- Adaptation Clearinghouse
- General Plan Guidelines
- State Hazard Mitigation Plan
- Cal-Adapt.org



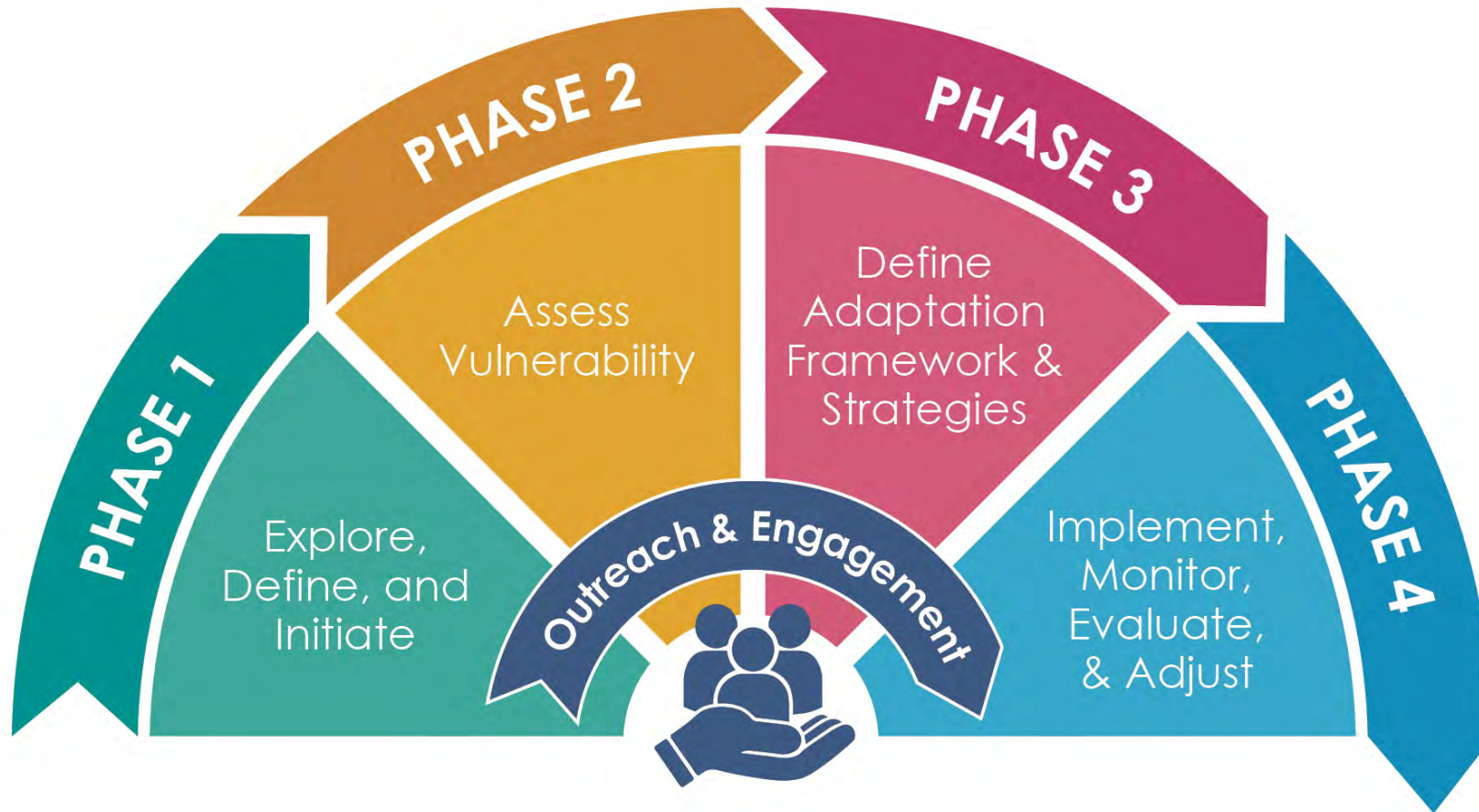
Update Process: Outreach

Early outreach to stakeholders

- Survey – Fall 2018
- Presentations – since Fall 2018
- Listening Session Webinars – July 2019
- Stakeholder Interviews – May through July 2019



APG 2.0 – Phases of Planning Process



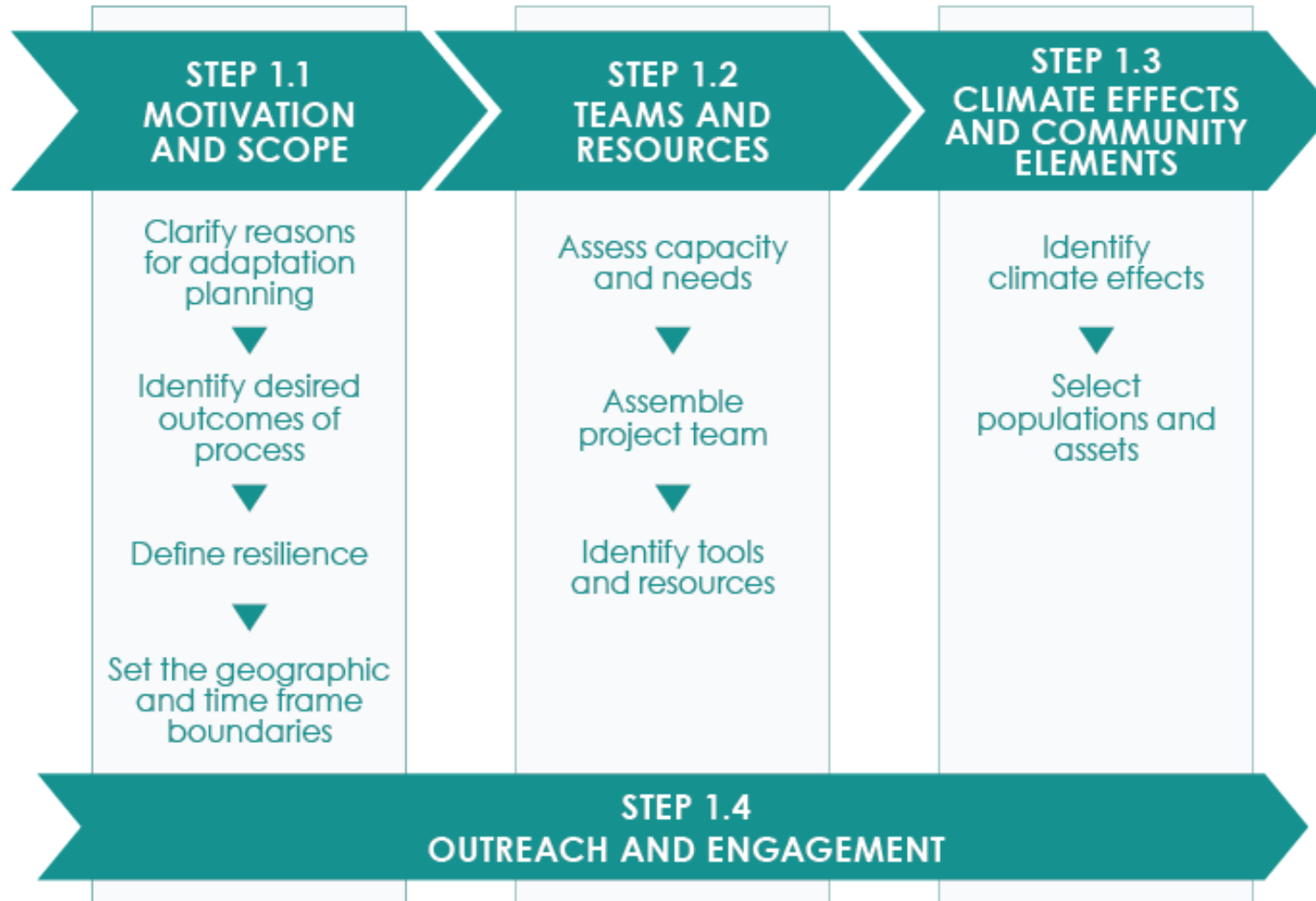
Phase 1

Explore, Define, Initiate



Cal OES
GOVERNOR'S OFFICE
OF EMERGENCY SERVICES

APG 2.0: Steps of Phase 1



APG 2.0: Phase 1

Phase 1 Summary

- Goal: To establish the basic aspects of the planning process, including what will be addressed and who will be involved.
- Result: A clearly-defined foundation and framework for the planning process.

Provides resources for integrating actions with LHMPs and other planning process.



APG 2.0: Phase 1 Summary

Motivation and Scope

- What is the vision for adaptation?
- What is the final product?
- What is the plan area?
- What is the timeframe for the plan and process?

Project Team and Resources

- What information is available?
- What is the budget?
- Who will be on the project team?
- What are the available tools?

Identify Climate Effects

- What are the climate effects?
- What are the populations and assets?



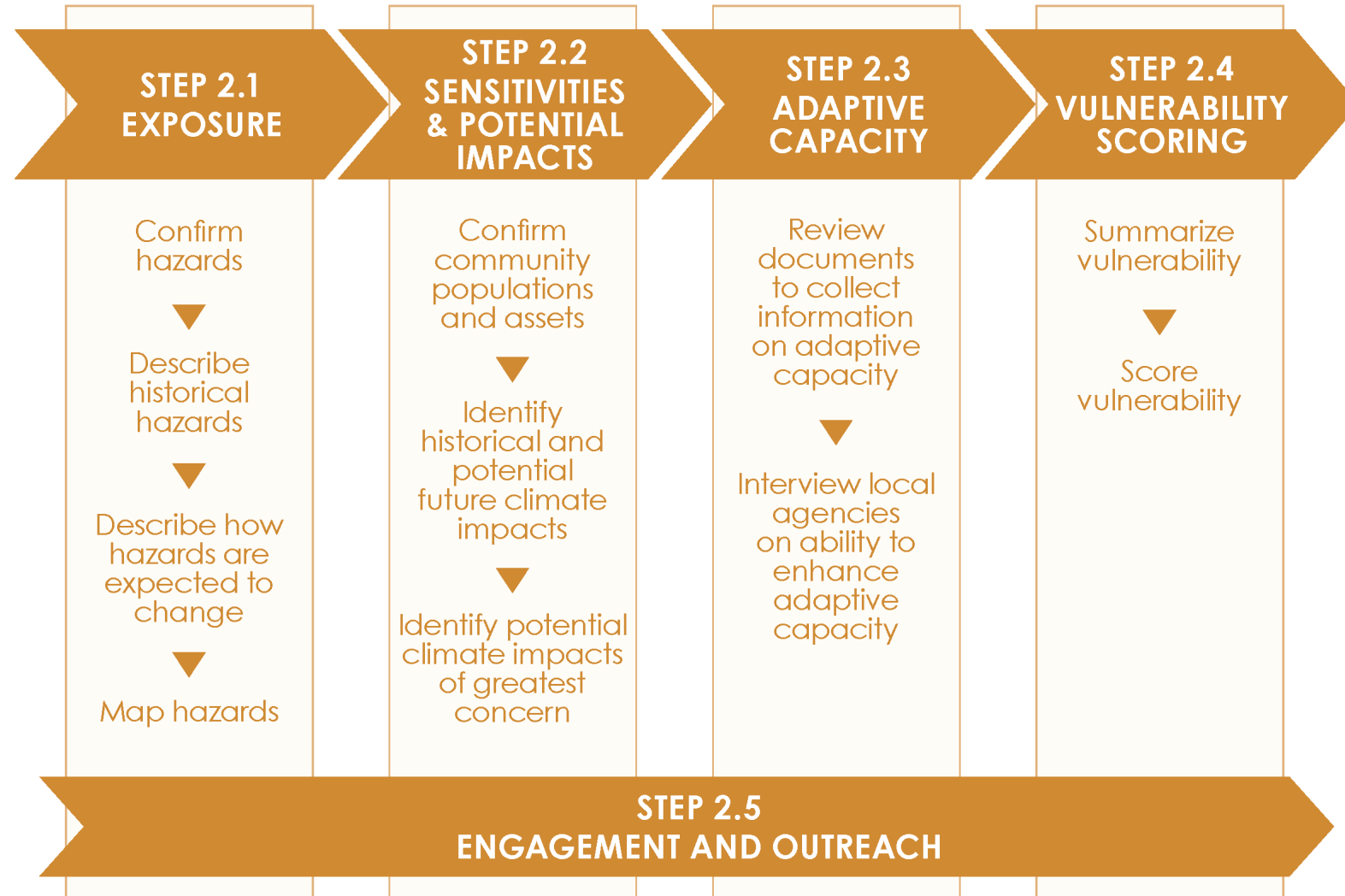
Phase 2

Assess Vulnerability



Cal OES
GOVERNOR'S OFFICE
OF EMERGENCY SERVICES

APG 2.0: Steps of Phase 2



APG 2.0: Phase 2

Phase 2 Summary

- Goal: To characterize the community's exposure to current and project climate hazards.
- Result: A vulnerability assessment.
 - The approach is designed to ensure the vulnerability assessment is consistent with California Government Code Section 65302(g)(4).

PHASE 2

Exposure

- What are the current and historical climate effects?
- What are the expected future conditions?

Populations and Assets

- How are people and assets affected?
- What is the adaptive capacity of people and assets?

Scoring

- How vulnerable are populations and assets to each effect?



Phase 3

Define Adaptation
Framework and
Strategies



Cal OES
GOVERNOR'S OFFICE
OF EMERGENCY SERVICES

Steps of Phase 3



APG 2.0: Phase 3

Phase 3 Summary

- Goal: To prepare the community's adaptation framework.
- Result: A set of specific policies and implementable strategies for adapting to climate change, consistent with the vision, goals, and desired outcomes of the community.
- APG provides resources on strategy development and provides example strategies by sector.

APG 2.0: Phase 3

Preparing Adaptation Strategies

- What is a strategy?
- How do strategies support the vision?
- How should we address uncertainty?
- What other considerations are there?

Prioritizing Adaptation Strategies

- What are the key factors to consider?



APG 2.0: Phase 3

Sectors

- Resources and example strategies use the same sectors as Adaptation Clearinghouse.
- Communities may use different frameworks.
- Equity and environmental justice integrated into all sectors.



Phase 4

Implement, Monitor,
Evaluate, and Adjust



Cal OES
GOVERNOR'S OFFICE
OF EMERGENCY SERVICES

APG 2.0: Phase 4



APG 2.0: Phase 4 Summary

Phase 4 Summary

- Goal: Establish an implementation program to monitor, evaluate, and modify strategies as needed.
- Result: A clear plan to put the adaptation strategies into effect, monitor and evaluate their effectiveness, and make revisions.



APG2.0: Phase 4

Implement

- How can communities implement adaptation?
- Who can support adaptation efforts?

Monitor and Evaluate

- What indicators inform performance?
- How do we know if adaptation efforts are working?

Adjust

- How do we revise strategies?



Equity, Outreach and Engagement

Integration into APG 2.0



Cal OES
GOVERNOR'S OFFICE
OF EMERGENCY SERVICES

Equity

Integration into Climate Adaptation Planning

- Identifying persons and frontline communities who may be most vulnerable to climate change and ensuring that planning process, distribution of resources, and efforts to address systemic wrongs are all conducted in an equitable manner
- Types of Equity: Procedural, Distributional, and Structural



Outreach and Engagement

Suggested Approaches

- Training local government officials on equity.
- Identifying key stakeholders through stakeholder mapping.
- Establishing community partners and valuing their time and expertise.
- Reaching all populations through creative outreach activities.



Outreach and Engagement

Suggested Approaches

- Recognizing existing community networks and assets.
- Involving community in creating adaptation strategies and managing implementation.
- Providing transparency and accountability in process, monitoring and evaluation.



Public Review



Cal OES
GOVERNOR'S OFFICE
OF EMERGENCY SERVICES

Public Review

- APG 2.0 is available at this Cal OES website:
www.caloes.ca.gov/climate
- We will receive comments on this draft through early January 2020.
- To give comments:
 - Please take our survey!
<https://www.surveymonkey.com/r/WVHWYMK>



APG 2.0 Schedule

- December 2019
 - Public Review Draft available for review
 - Webinars, ICARP TAC presentation, Interagency Working Group
- January – April 2020
 - Revisions to draft APG
 - Public review period and additional revisions
 - Final APG release



Questions



Cal OES
GOVERNOR'S OFFICE
OF EMERGENCY SERVICES

Thank You

Derek.Lambeth@CalOES.ca.gov



Cal OES
GOVERNOR'S OFFICE
OF EMERGENCY SERVICES